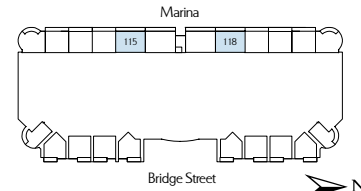


# TOWNHOMES 115 AND 116

## Levels 1 & 2

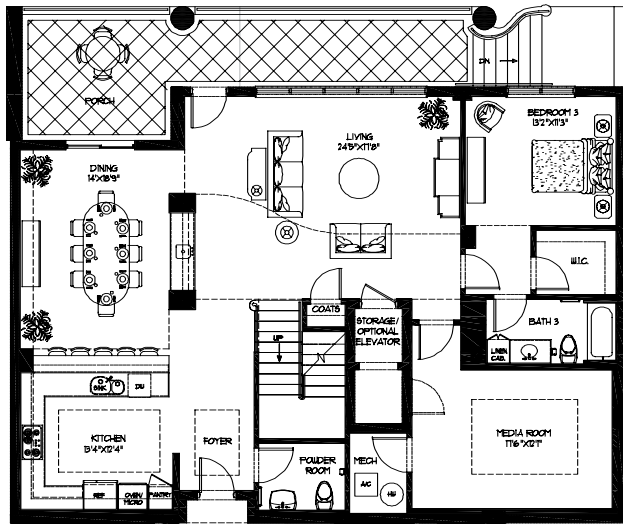
3 Bedrooms/3.5 Baths/Living Room/  
Dining Room/Media Room

Air Conditioned Area 3,325 Sq. Ft.  
Terraces 466 Sq. Ft.

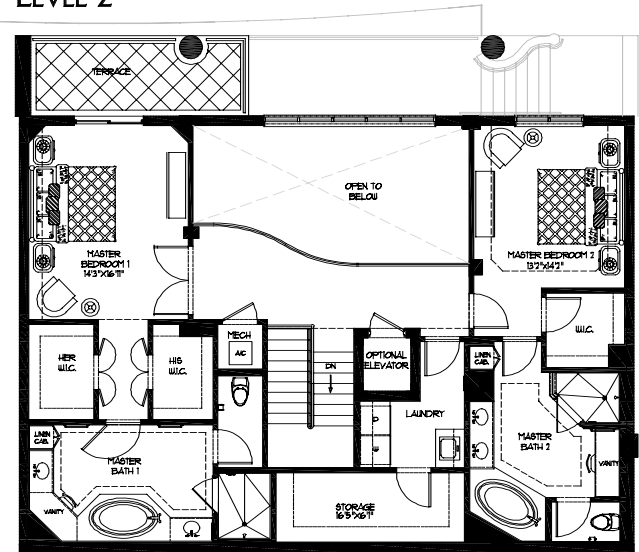


Residence plan 118 is the mirror image of the plan shown.

## LEVEL 1



## LEVEL 2



The Living Area square footage, or Air Conditioned Area Square Footage (ACSF), amounts indicated for individual Residence Units are determined based on the Unit Boundaries as set forth in the Declaration. These area designations are smaller than the square footage amounts traditionally used by the design industry for residential condominium units ("Traditional ACSF Area"). The Traditional ACSF Area for the indicated Residence Units, which may be used for comparison purposes with projects utilizing this methodology, is 3,589.