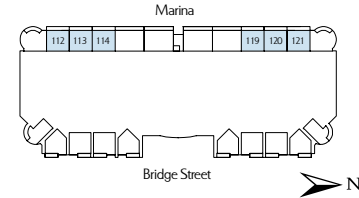


TOWNHOMES 112, 113, 114, 119, 120 AND 121

Levels 1 & 2

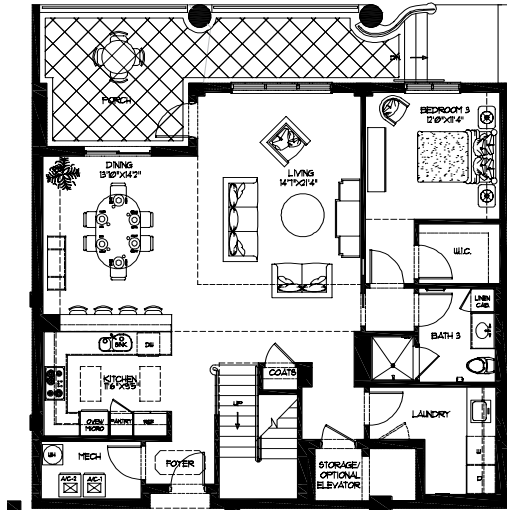
3 Bedrooms/3 Baths/Living Room/
Dining Room/Study

Air Conditioned Area 2,546 Sq. Ft.
Terraces 382 Sq. Ft.

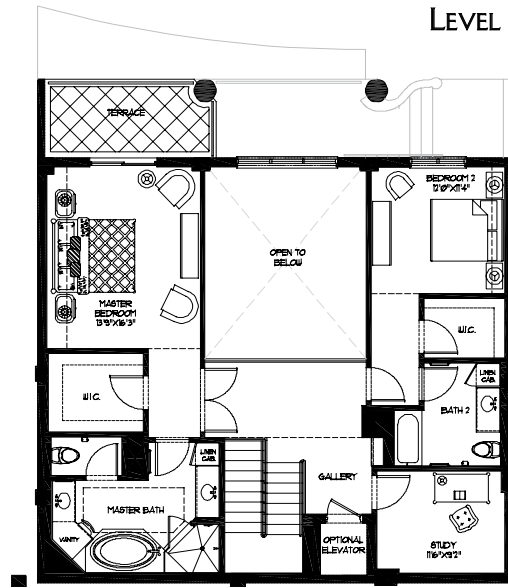


Residence plans 113, 119 and 121 are the mirror image of the plan shown.
Residences 113, 114, 119 and 120 include an extra column in the living room.

LEVEL 1



LEVEL 2



The Living Area square footage, or Air Conditioned Area Square Footage (ACSF), amounts indicated for individual Residence Units are determined based on the Unit Boundaries as set forth in the Declaration. These area designations are smaller than the square footage amounts traditionally used by the design industry for residential condominium units ("Traditional ACSF Area"). The Traditional ACSF Area for the indicated Residence Units, which may be used for comparison purposes with projects utilizing this methodology, is 2,766.